

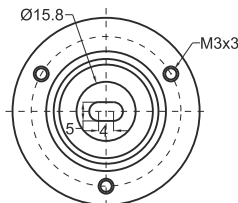
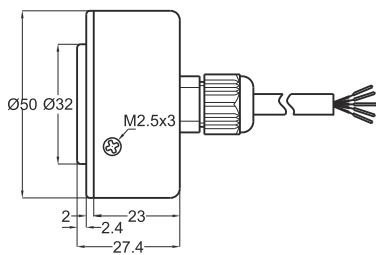
Magnetic incremental encoders Flat body

- 50 mm case diameter
- Magnetic rotary encoder
- Pulse options :
2 - 4 - 8 - 16 - 25 - 32 - 40 - 50 - 64 - 80 - 100 - 125,
128 - 160 - 200 - 250 - 256 - 400 - 500 - 512 - 1024 ppr.
- Flat - rodless type
- IP 66 for water proof type
- Water proof types are usefull for stone machinery and for any outdoor applications



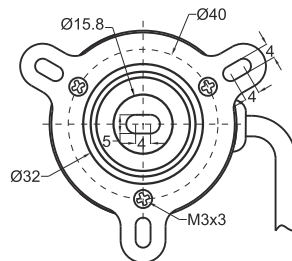
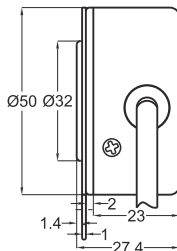
Technical Specifications

Type of Measurement	Magnetic incremental contactless
Resolution	2 ... 1024 ppr.
Output Channels	A,B,Z or A,Ā, B,Ī, Z,Z̄
Output Type	Pushpull, Linedriver or High Linedriver
Supply Voltage	8-24 VDC (Standard) or 5 VDC (Optional)
Power Consumption (without load)	< 40 mA (24 VDC)
Electrical Connections	2.5m Cable (Standard), Connector (Optional)
Max. Speed	3500 rpm
Case Diameter	Ø50 mm
Case Material	Aluminium / Steel
Operating Temperature	-20°C ... +80°C
Storage Temperature	-30°C ... +90°C
Water Proof	Optional



Push-pull Cable Output

- +V : Brown
- 0V : White
- GND : Shield
- Ch A : Yellow
- Ch B : Green
- Ch Z : Gray



TTL - HTL Linedriver Cable Output

- +V : Brown
- 0V : White
- GND : Shield
- Ch A : Yellow
- Ch B : Green
- Ch Z : Gray
- Ch A inv. : Blue
- Ch B inv. : Red
- Ch Z inv. : Pink

Model	Case Diameter	Output	Resolution	Output Channels	Supply Voltage	Connector / Cable	Cable Output
(example) MRI	50F	HTL	512	Z	V2	2M5	R
MRI	50F : Flat case 50FW : Water proof Flat case	LTP : Push-pull TTL : TTL Linedriver HTL : High Linedriver	2 ... 1024 ppr.	Z : A, B, Z B : A, B	V1 : 5V DC V2 : 8-24V DC	2M5 : 2,5 meter cable 5M : 5 meter cable 8M : 8 meter cable 10M : 10 meter cable	R : Radial A : Axial