

MRA 50A

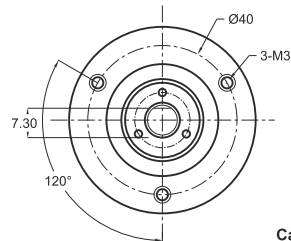
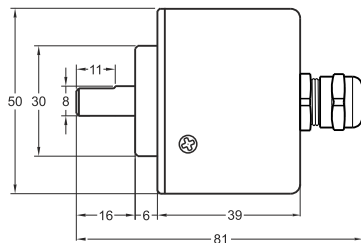
Magnetic Absolute Encoder SSI Output

- 50 mm case diameter
- Magnetic absolute rotary encoder
- SSI Absolute (10 bit / 360°)
- 2.5m cable (standard) with Connector (Optional) electrical connection



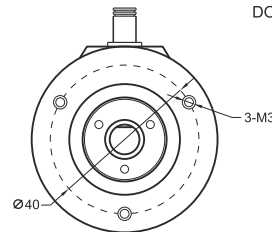
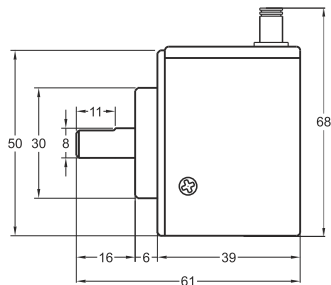
Technical Specifications

Type of Measurement	Magnetic absolute
Resolution	10 bit / 360°
Output Type	SSI
Output Signal Type	5V TTL
Supply Voltage	8-24 VDC (Standard) or 5 VDC (Optional)
Power Consumption (without load)	< 40mA (24 VDC)
Electrical Connections	2.5m Cable (Standard), Connector (Optional)
Max. Permissible Shaft Loading Radial	100 N
Axial	60 N
Max. Speed	1000 rpm
Rod Diameter	Ø8 mm
Rod Material	Stainless Steel
Case Diameter	Ø50 mm
Case Material	Aluminium / Steel
Operating Temperature	-20°C ... +80°C
Storage Temperature	-30°C ... +90°C



Cable Output

- +V : Brown
- 0V : White
- CLK : Green
- CSN : Yellow
- DO : Gray



Model	Case Diameter	Output Signal Type	Output Type	Supply Voltage	Connector / Cable	Cable Output
(example) MRA	50A	TT	SSI	V1	2M5	R
MRA	50A : Clamping flange 50AW : Water proof	TT : TTL Absolute	SSI	V1 : 5V DC V2 : 8-24V DC	2M5 : 2.5 meter cable 5M : 5 meter cable 8M : 8 meter cable 10M : 10 meter cable	R : Radial A : Axial