

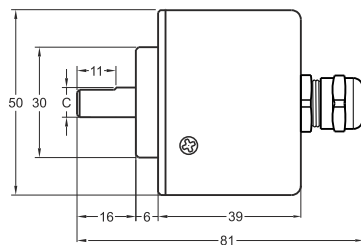
## Magnetic Incremental Encoder

- 50 mm case diameter
- Magnetic incremental encoder
- 2 - 4 - 8 - 16 - 25 - 32 - 40 - 50 - 64 - 80 - 100 - 125, 128 - 160 - 200 - 250 - 256 - 400 - 500 - 512 ppr.
- IP 54 protection

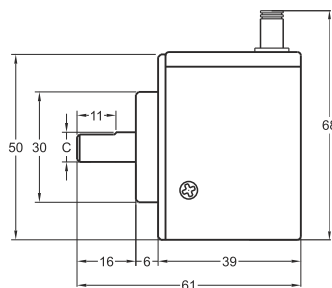
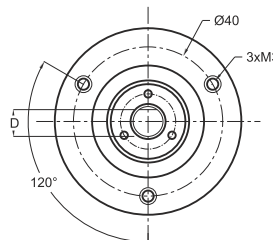


### Technical Specifications

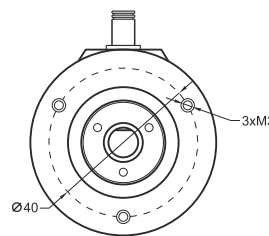
|                                  |   |
|----------------------------------|---|
| Type of Measurement              | Magnetic incremental contactless            |
| Resolution                       | 2 ... 512 ppr.                              |
| Output Channels                  | A,B,Z or A,Ā, B,Ī, Z,Z̄                     |
| Output Type                      | Push-pull, TTL Linedriver or HTL Linedriver |
| Supply Voltage                   | 8-24 VDC (Standard) or 5 VDC (Optional)     |
| Power Consumption (without load) | < 40 mA (24 VDC)                            |
| Electrical Connections           | 2.5m cable (Standard)                       |
| Max. Permissible Shaft Loading   | Radial: 100 N<br>Axial: 60 N                |
| Max. Speed                       | 3500 rpm                                    |
| Shaft Diameter                   | Ø6 - 8 - 10 mm                              |
| Shaft Material                   | Stainless Steel                             |
| Case Diameter                    | Ø50 mm                                      |
| Case Material                    | Aluminium / Steel                           |
| IP Degree                        | IP 54                                       |
| Operating Temperature            | -20°C ... +80°C                             |
| Storage Temperature              | -30°C ... +90°C                             |



Shaft Type / Axial



Shaft Type / Radial



#### Push-Pull / TTL Linedriver Cable Output

|           |          |
|-----------|----------|
| +V        | : Brown  |
| 0V        | : White  |
| GND       | : Shield |
| Ch A      | : Yellow |
| Ch B      | : Green  |
| Ch Z      | : Gray   |
| Ch A inv. | : Blue   |
| Ch B inv. | : Red    |
| Ch Z inv. | : Pink   |

#### HTL Linedriver Cable Output

|           |          |
|-----------|----------|
| +V        | : Brown  |
| 0V        | : White  |
| GND       | : Shield |
| Ch A      | : Yellow |
| Ch B      | : Green  |
| Ch Z      | : Gray   |
| Ch A inv. | : Blue   |
| Ch B inv. | : Red    |
| Ch Z inv. | : Pink   |

|        |           |        |        |
|--------|-----------|--------|--------|
| MRI 50 | R (shaft) |        |        |
|        | C         | D      |        |
|        | Ø6mm      | 5,50mm |        |
|        | Ø8mm      | 7,30mm |        |
|        |           | Ø10mm  | 9,00mm |

| Model         | Case Diameter | Case Type                               | Shaft Diameter                     | Output   | Resolution     | Output Channels         | Supply Voltage              | Connector / Cable   | Cable Output            |
|---------------|---------------|---|------------------------------------|--|----------------|-------------------------|-----------------------------|---|-------------------------|
| (example) MRI | 50            | A                                       | R6                                 | HLD  | 500            | Z                       | V2                          | 2M5   | R                       |
| MRI           | 50mm          | A : Clamping flange<br>AW : Water proof | R6 : 6mm<br>R8 : 8mm<br>R10 : 10mm | LTP : Push-Pull<br>LD : TTL Linedriver<br>HLD : HTL Linedriver | 2 ... 512 ppr. | Z : A, B, Z<br>B : A, B | V1 : 5V DC<br>V2 : 8-24V DC | 2M5 : 2,5 meter cable<br>5M : 5 meter cable<br>8M : 8 meter cable<br>10M : 10 meter cable | R : Radial<br>A : Axial |